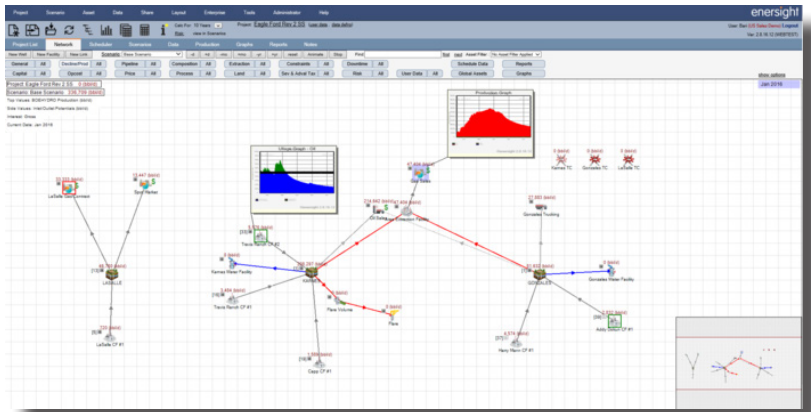


Manage today's risks, stay on target

Can you adapt to shifting markets in hours? Asset Planners need to quickly evaluate development options and make the best decisions about how to manage an ongoing field development plan. At its core, enersight™ provides the industry's most complete and flexible development modeling that is both accurate and agile. Planning and engineering teams have a full view of the development plan, incorporating daily activity scheduling, facilities construction and capacities, a pipeline flow model alongside a powerful economic engine.

enersight™ provides development agility

- Develop detailed planning models that are defensible, auditable, and fully incorporate constraints and downtime.
- Create detailed production and economic forecasts.
- Quickly evaluate 'what-if' scenarios.
- Strategically plan how to adapt to market shifts and operational changes.
- Track actual performance against short and long term production and capital targets.



enersight™ Software – Field Development Modeling

enersight™ is the petroleum industry's most comprehensive, integrated planning software that connects asset teams, corporate planners and operational teams enabling them to make the most competitive and cost effective development decisions at every stage of their business.

Where there is complexity – whether it's conventional economics for small drilling projects, operations for projects with thousands of wells, or unconventional projects – enersight's planning intelligence is invaluable for efficiency.

Case Study: How far can I scale back from development and still avoid violating lease commitments

OBJECTIVES

- Avoid violation of lease commitments in development plans or scaled back plan revisions.
- Fully understand the impact of lease obligations and penalties.

BACKGROUND

- Many operators manage hundreds of leases or more, each with their own unique renewal terms and obligations.
- The costs of missing lease obligations can amount to thousands of dollars per acre.

ANALYSIS

- enersight™ complete modeling captures all lease obligations so development plans can be easily created to meet all lease terms.
- Plans can be scaled back, still respecting lease obligations, so targeted savings are not lost in penalties.

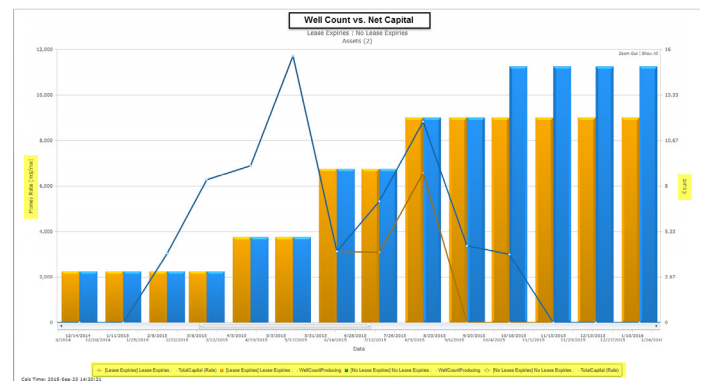
RESULTS

- Avoid lease penalties in long-term planning and short-term decision making.
- Uncover, and factor into planning, thousands or millions of dollars of lease commitment that can put capital returns at risk.

Drilling Program	Well	Step	Requested Start Date	Actual Start Date	Delay In Days	Cause
Example Program	Heights Pad F 1	1	15-Jan-15	1-Mar-15	45	Step 1 (Drill) could not start because Resource Type 'Drilling Rig' was not available on Jan 15, 2015
Example Program	Heights Pad F 1	1	10-Mar-15	21-Mar-15	11	Step 1 (Drill) could not start because Resource Type 'Drilling Rig' was not available on Mar 10, 2015
Example Program	Katy Pad F 1	1	7-Jun-15	7-Jun-15	0	Well 'Katy Pad F 1' expired Jun 7, 2015 by Drilling Rule 'Lease A'
Example Program	Katy Pad F 2	1	7-Jun-15	7-Jun-15	0	Well 'Katy Pad F 2' expired Jun 7, 2015 by Drilling Rule 'Lease A'
Example Program	Katy Pad F 3	1	7-Jun-15	7-Jun-15	0	Well 'Katy Pad F 3' expired Jun 7, 2015 by Drilling Rule 'Lease A'

List all expired wells and expiry dates with Drilling Delay Report

Use Drilling Rules to set a clock for wells in a lease that automatically re-sets at the start of drilling or any defined activity. All wells on a lease share the same clock



Accurately determine the relationship between rig count and the effect on net capital, and wells expired

3esi • Enersight

3esi-Enersight is the world-leading provider of solutions for integrated strategy, planning and execution in upstream oil and gas.



Headquarters
Canada, Calgary
+1.403.270.3270



Oxfordshire
+44.7710.918.417



Brisbane
+61.4.1961.0835



Jakarta
+62.21.5703188

Houston
+1.832.456.0000

Dubai
+97.150.651.2403

Bogota
+57.301.660.2811

Beijing
+86.10.8441.1933

Barcelona
+34.932.018.872

Auckland
+64.2189.2823

Kuala Lumpur
+601.2.387.2647

Moscow
+7.495.627.53.94